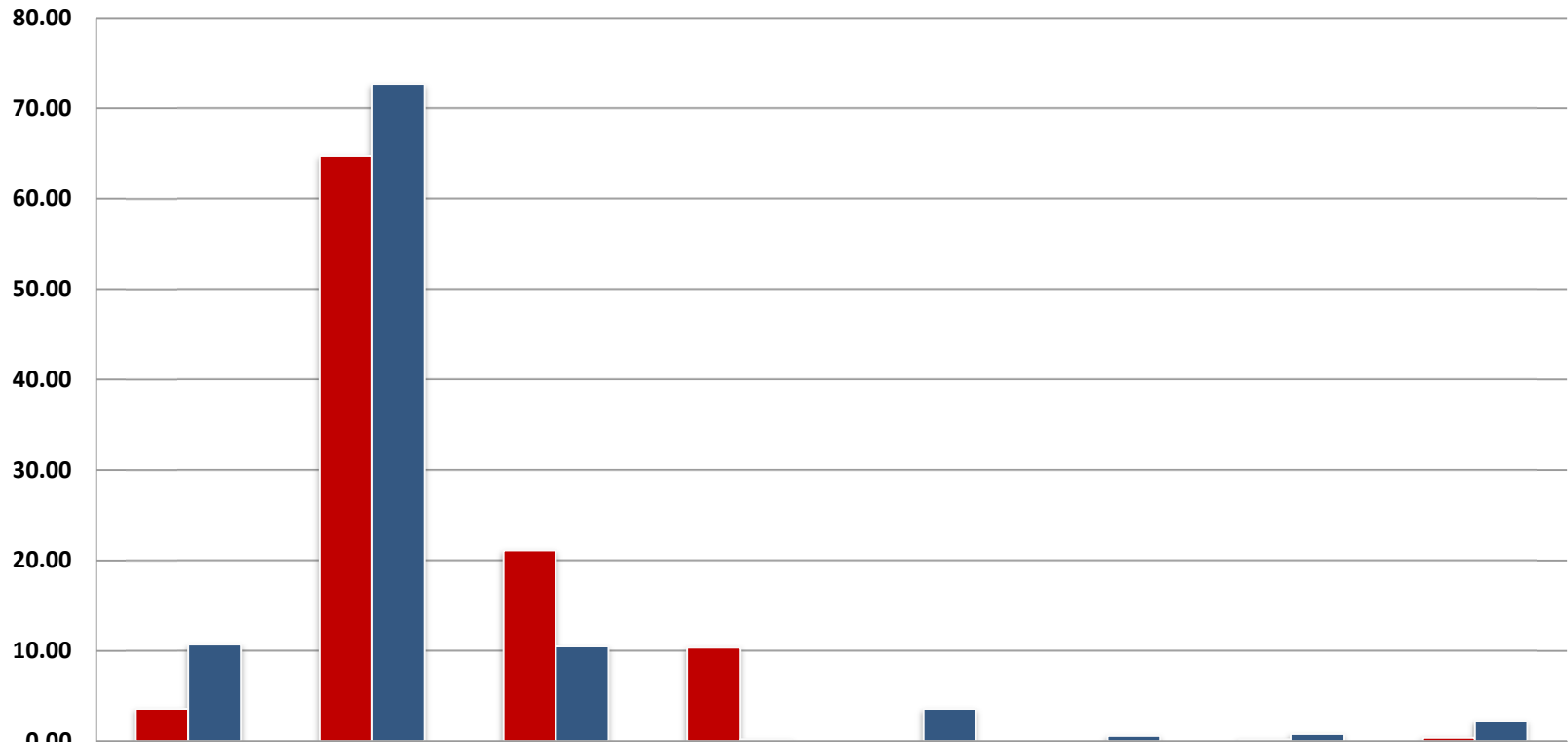
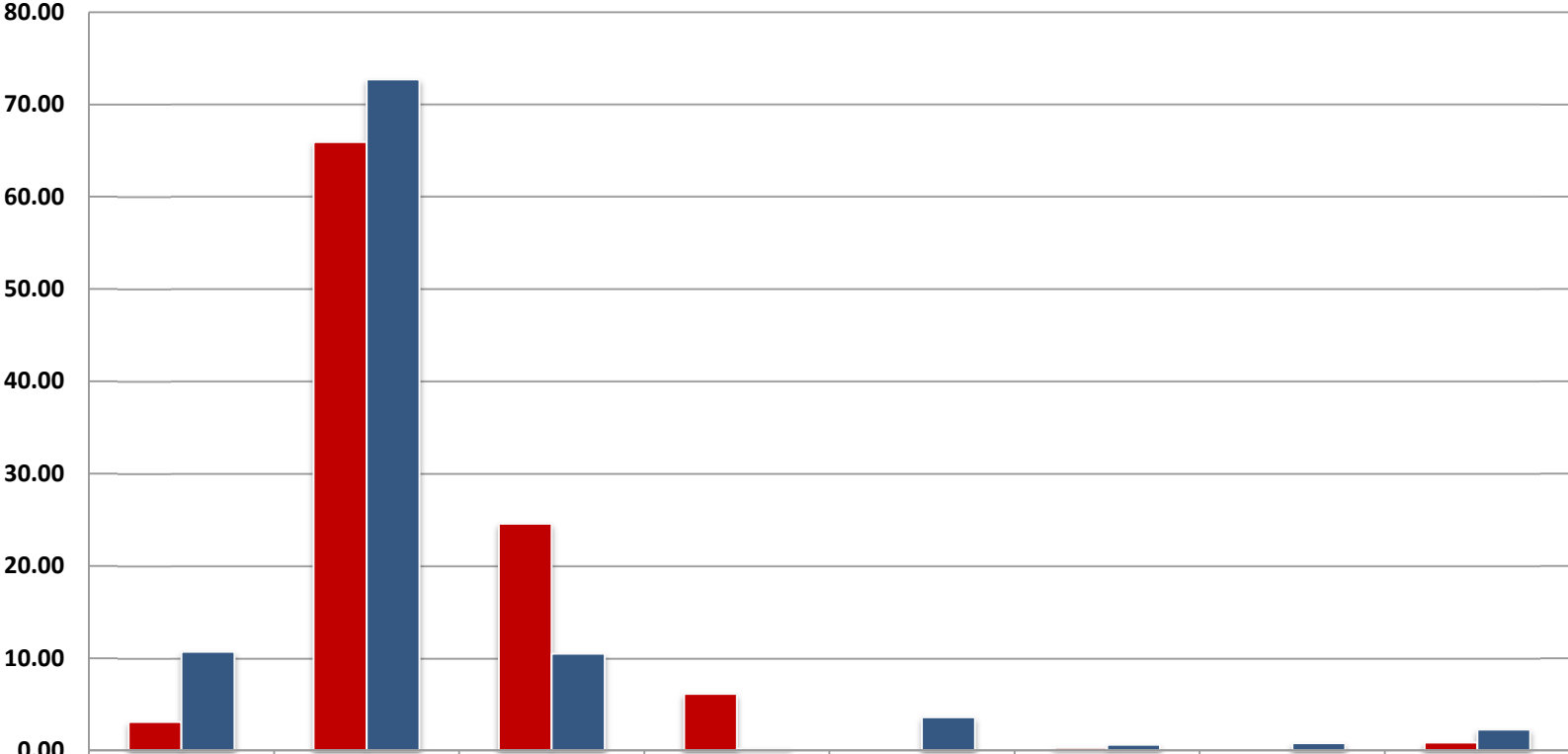


BEA Quarter 4 2011



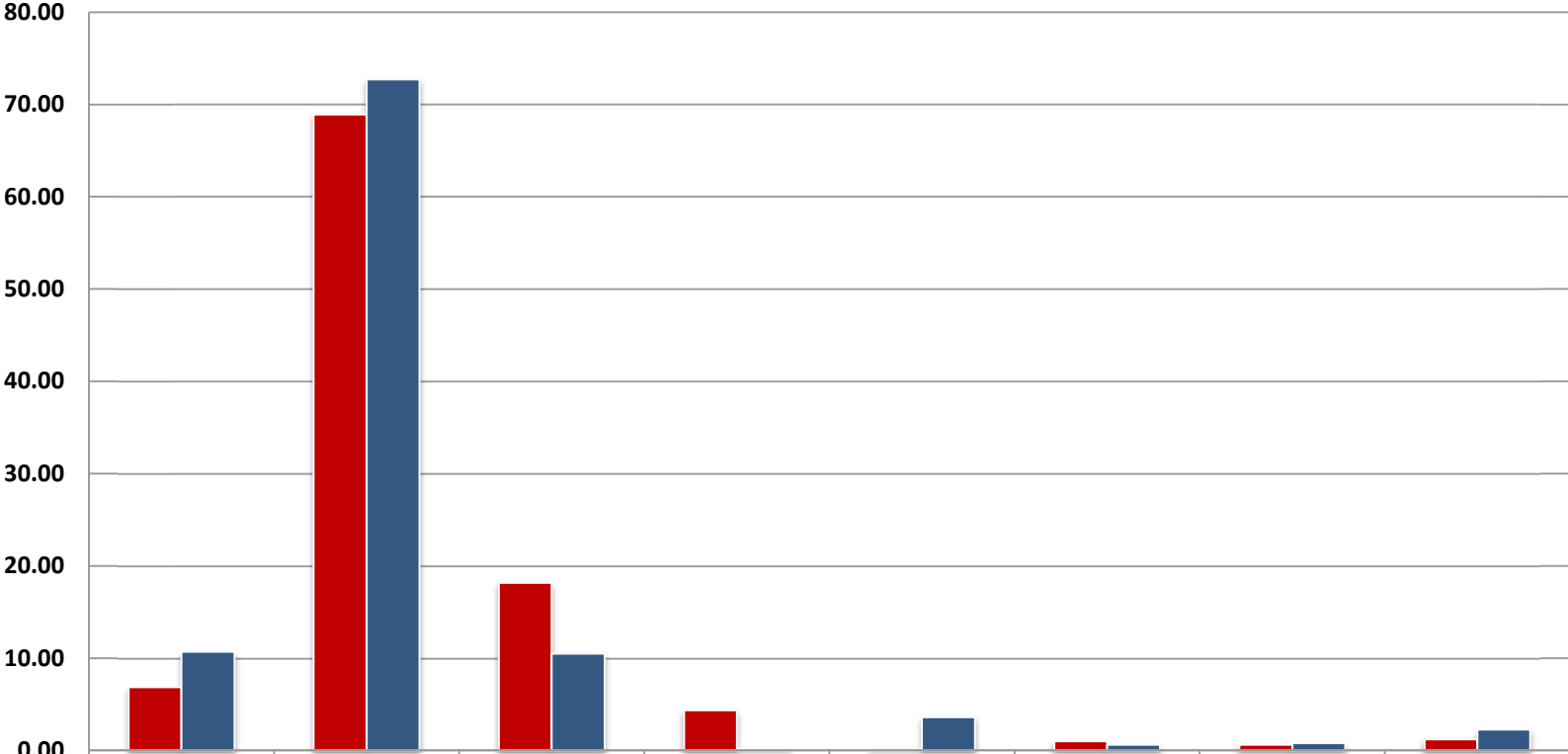
	Hispanic or Latino	White	Black or African American	Asian	Native Hawaiian or Other Pacific Islander	American Indian or Alaska Native	Multiple Races	Targeted Disabilities
■ Workforce	3.59	64.74	21.12	10.36	0.00	0.00	0.20	0.40
■ CLF	10.7	72.7	10.5	0.2	3.6	0.6	0.8	2.27

BIS Quarter 4 2011



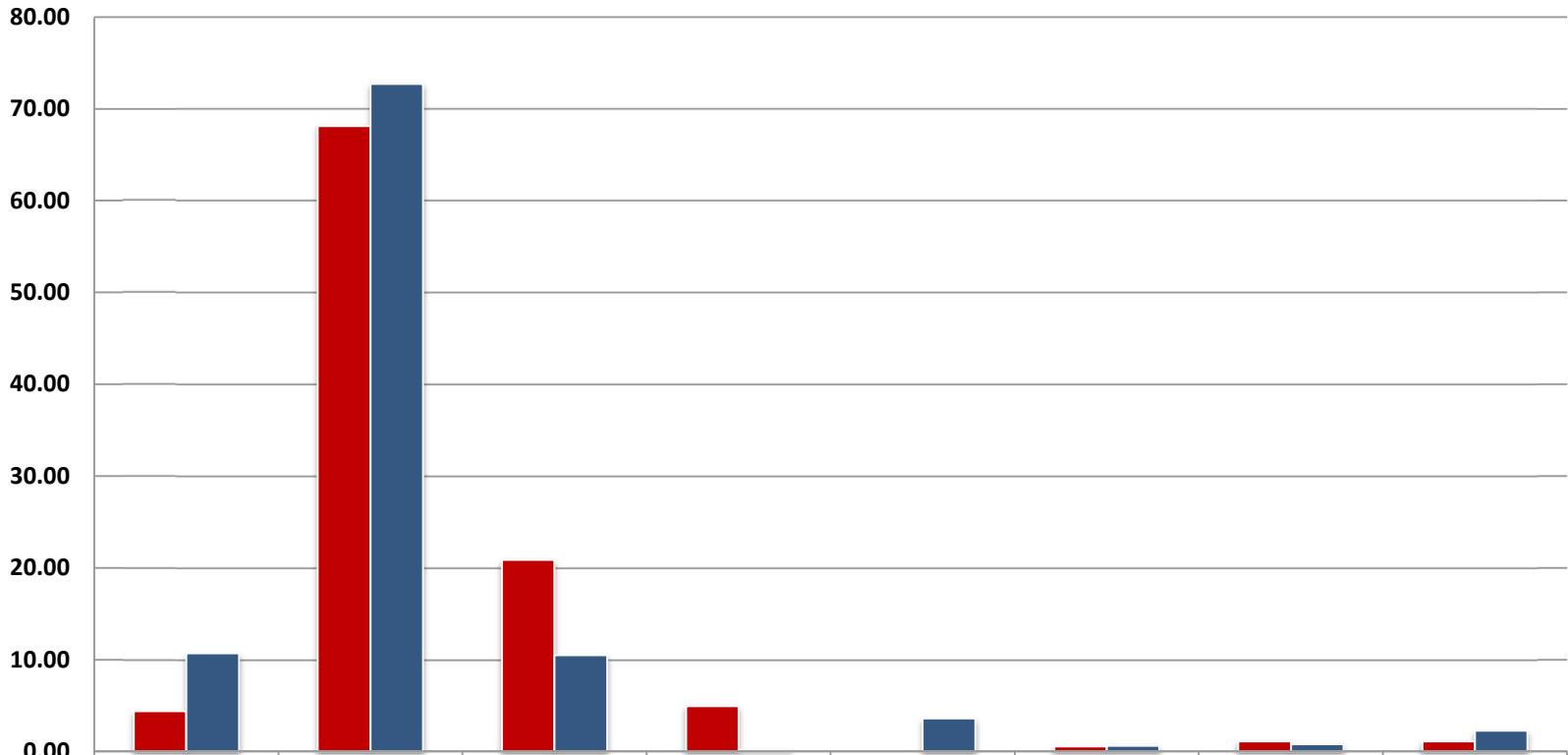
	Hispanic or Latino	White	Black or African American	Asian	Native Hawaiian or Other Pacific Islander	American Indian or Alaska Native	Multiple Races	Targeted Disabilities
■ Workforce	3.07	65.92	24.58	6.15	0.00	0.28	0.00	0.84
■ CLF	10.7	72.7	10.5	0.2	3.6	0.6	0.8	2.27

Census Quarter 4 2011



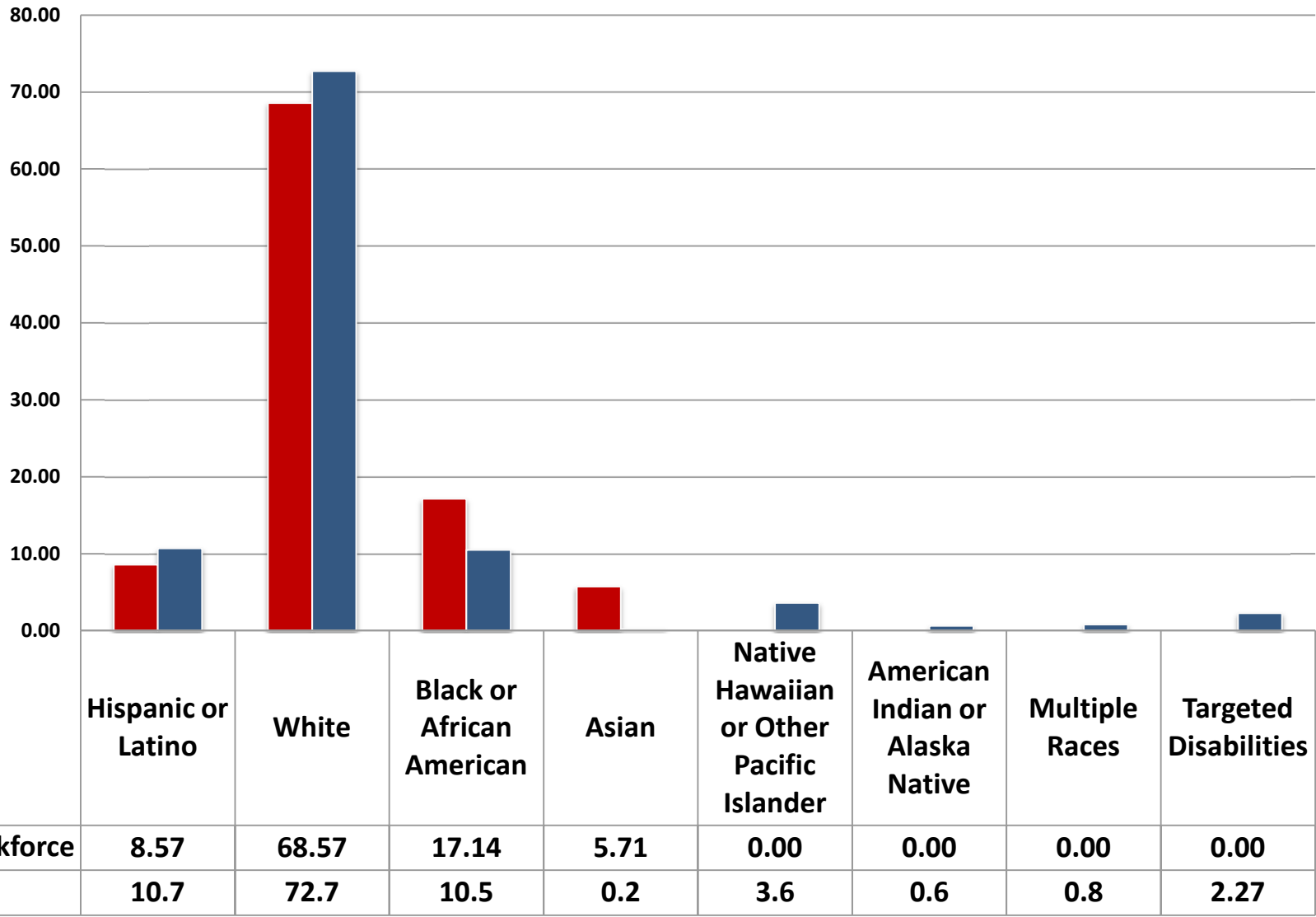
■ Workforce	6.84	68.89	18.15	4.35	0.14	1.00	0.62	1.18
■ CLF	10.7	72.7	10.5	0.2	3.6	0.6	0.8	2.27

EDA Quarter 4 2011

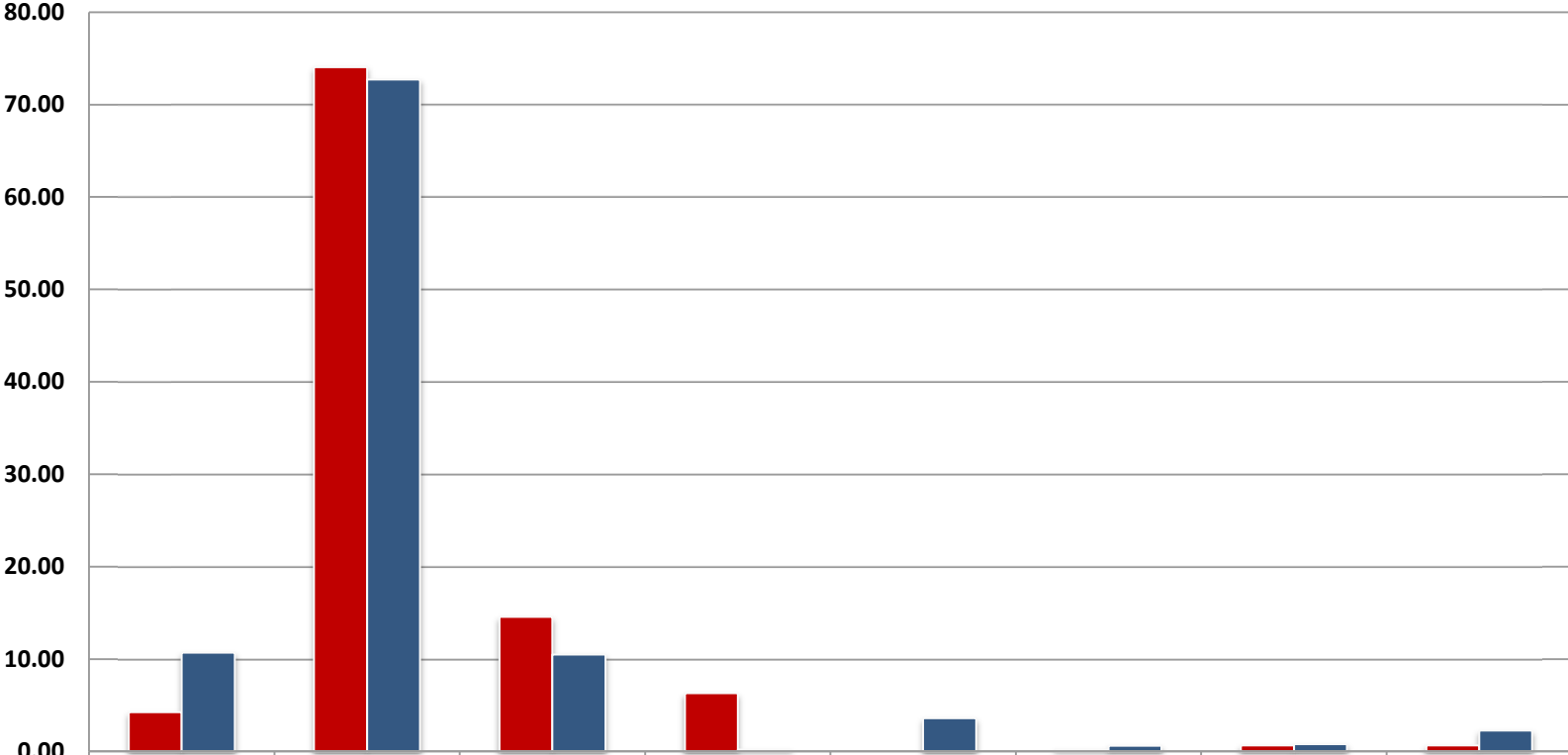


	Hispanic or Latino	White	Black or African American	Asian	Native Hawaiian or Other Pacific Islander	American Indian or Alaska Native	Multiple Races	Targeted Disabilities
■ Workforce	4.40	68.13	20.88	4.95	0.00	0.55	1.10	1.10
■ CLF	10.7	72.7	10.5	0.2	3.6	0.6	0.8	2.27

ESA Quarter 4 2011

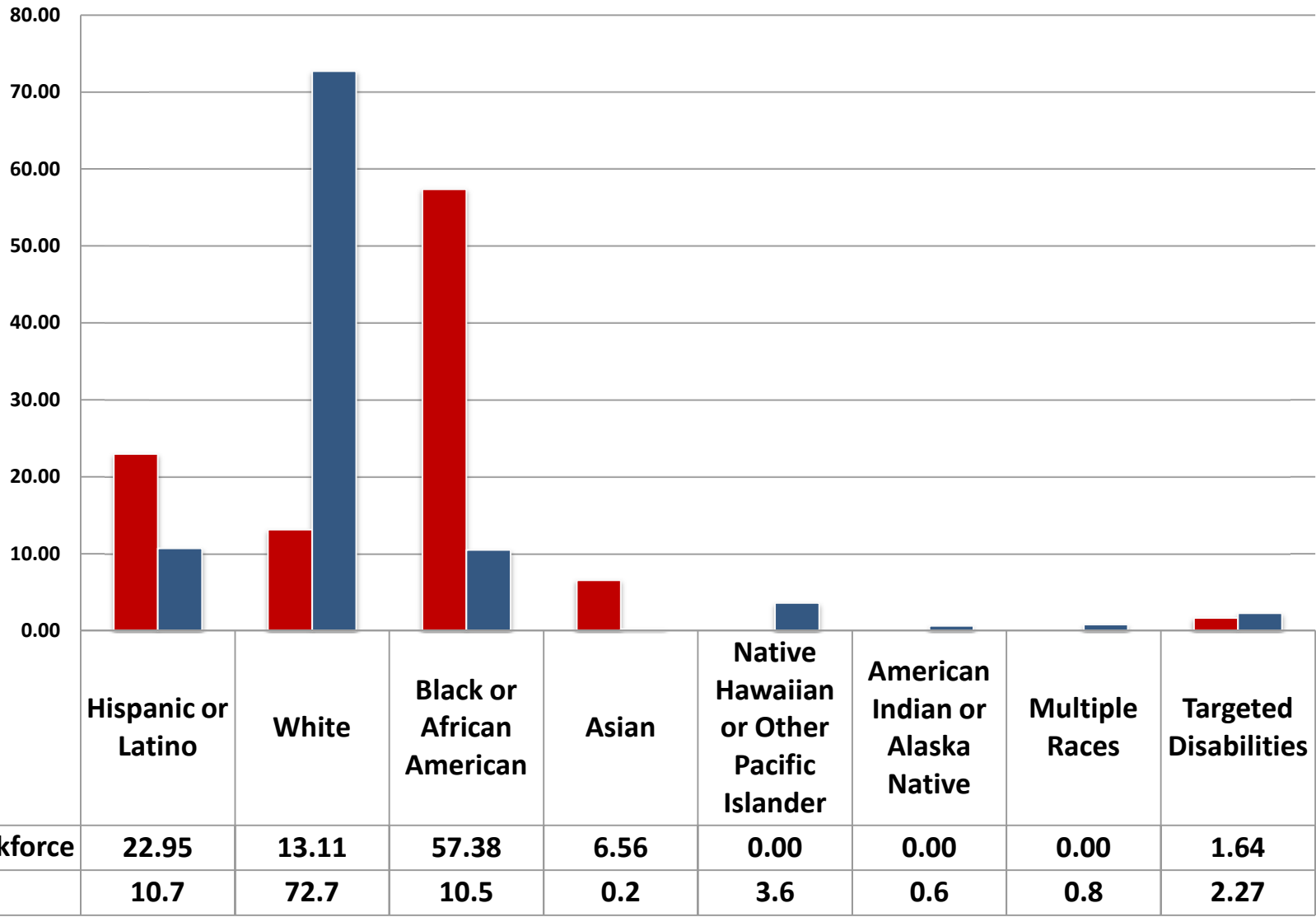


ITA Quarter 4 2011

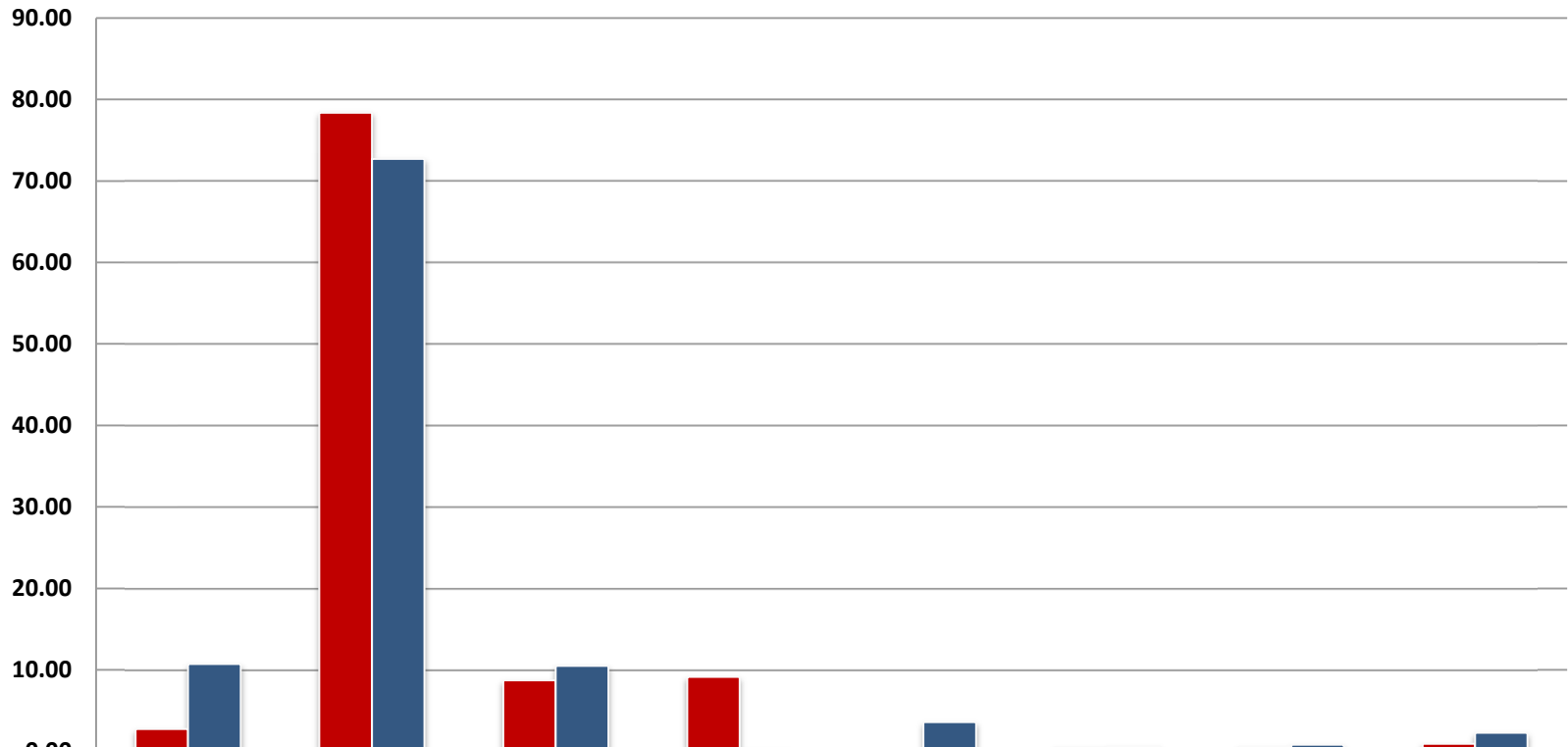


■ Workforce	4.24	74.06	14.56	6.29	0.00	0.21	0.64	0.64
■ CLF	10.7	72.7	10.5	0.2	3.6	0.6	0.8	2.27

MBDA Quarter 4 2011

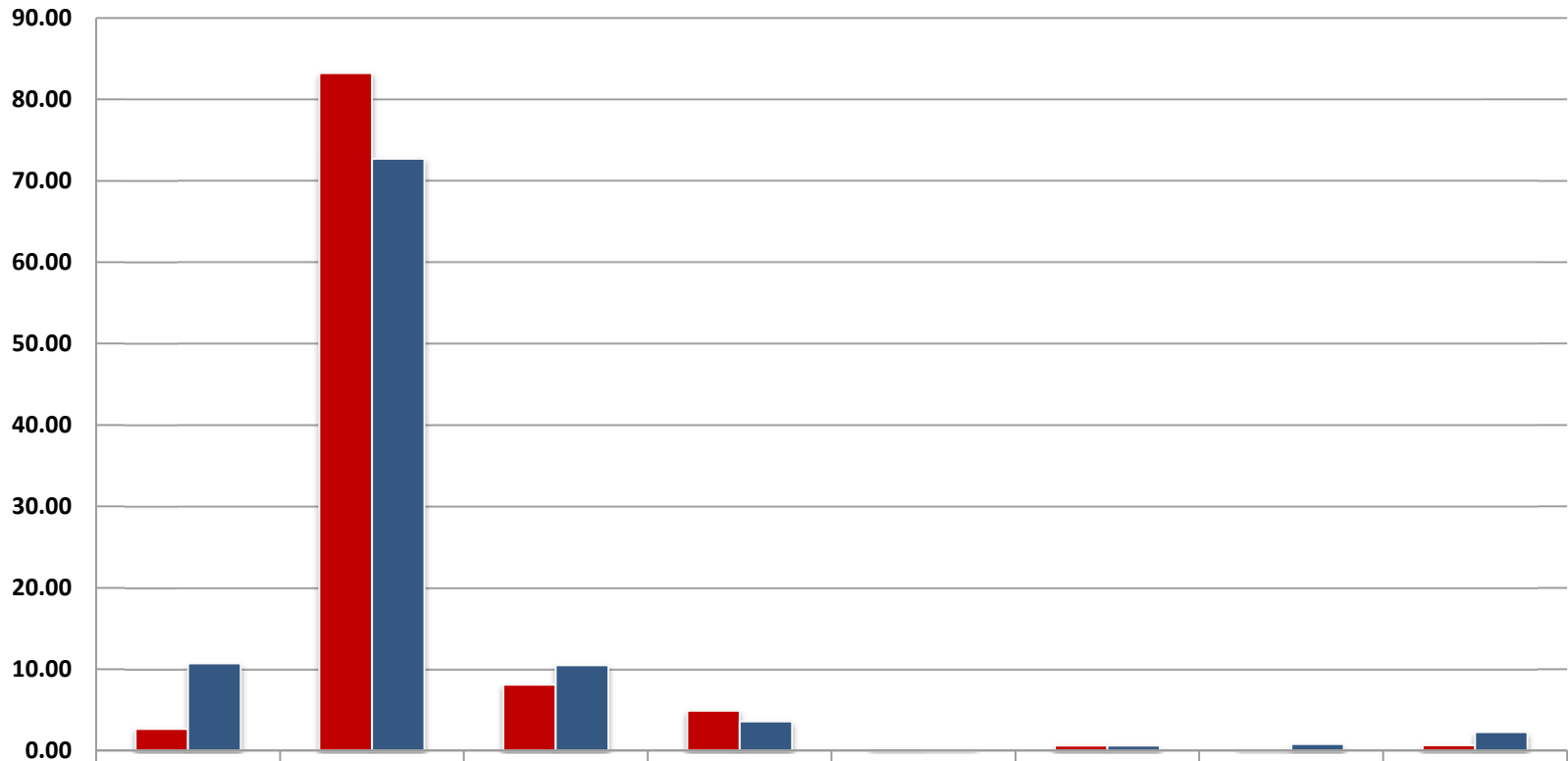


NIST Quarter 4 2011



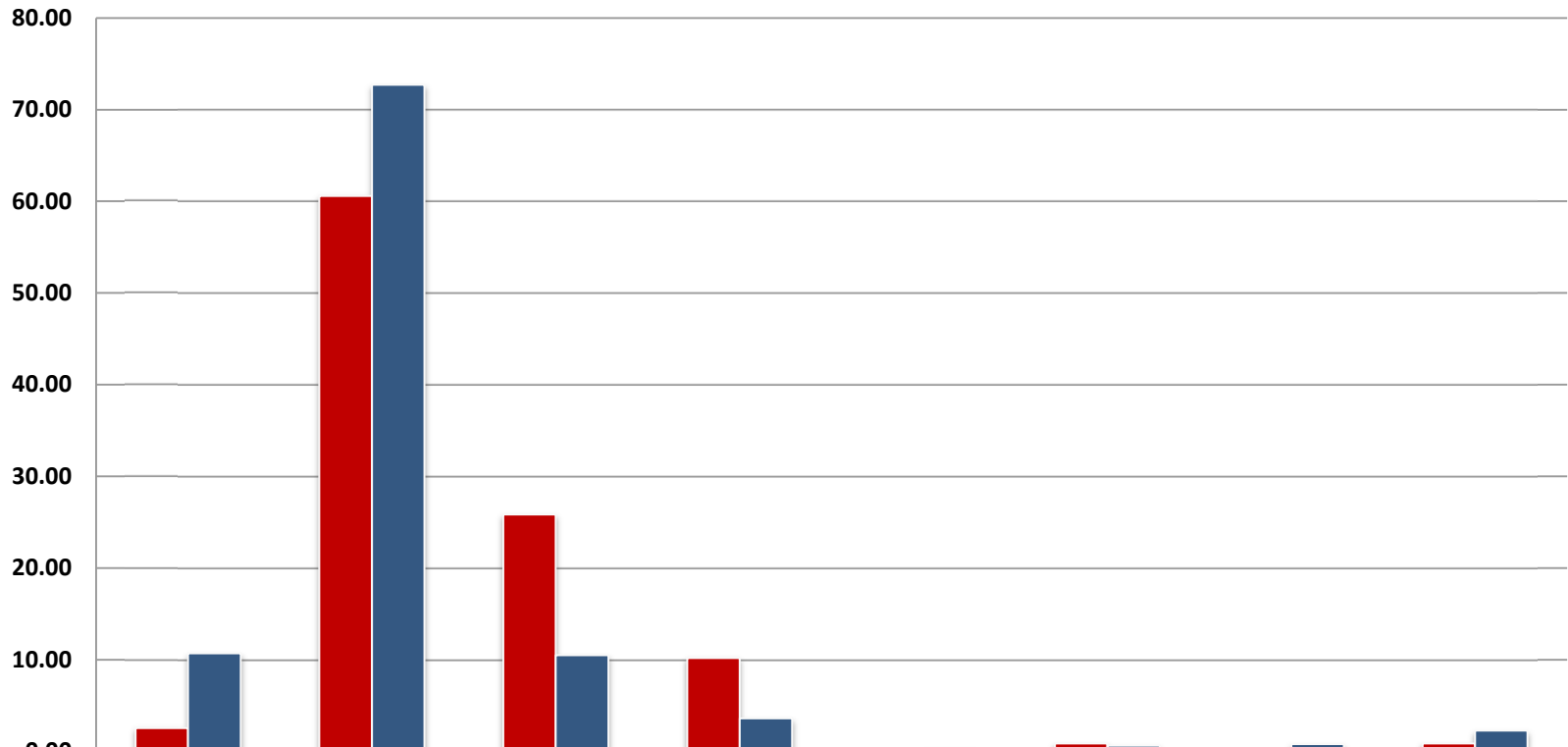
■ Workforce	2.72	78.37	8.72	9.14	0.04	0.49	0.53	0.92
■ CLF	10.7	72.7	10.5	0.2	3.6	0.6	0.8	2.27

NOAA Quarter 4 2011



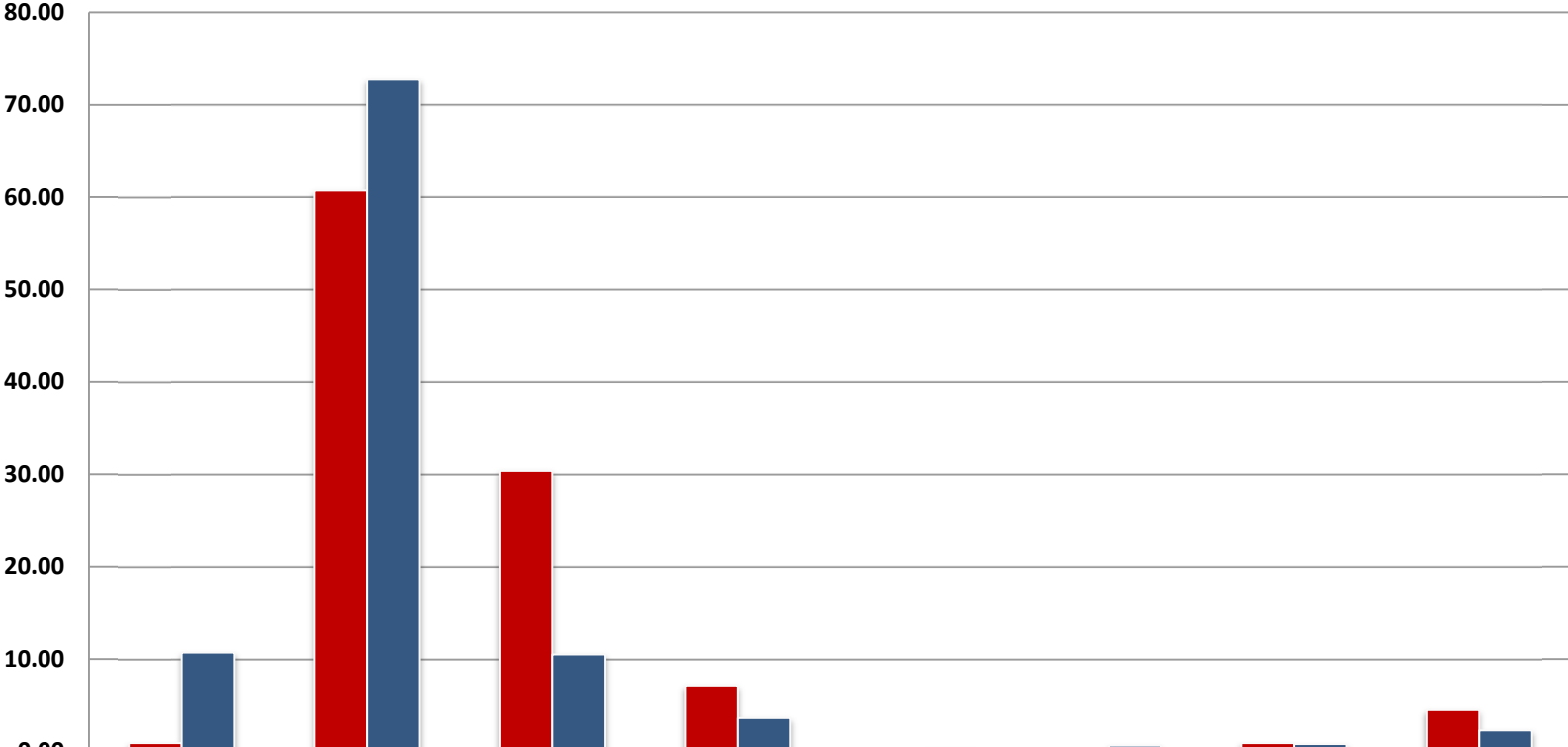
	Hispanic or Latino	White	Black or African American	Asian	Native Hawaiian or Other Pacific Islander	American Indian or Alaska Native	Multiple Races	Targeted Disabilities
■ Workforce	2.66	83.21	8.10	4.90	0.26	0.63	0.23	0.64
■ CLF	10.7	72.7	10.5	3.6	0.2	0.6	0.8	2.27

NTIA Quarter 4 2011



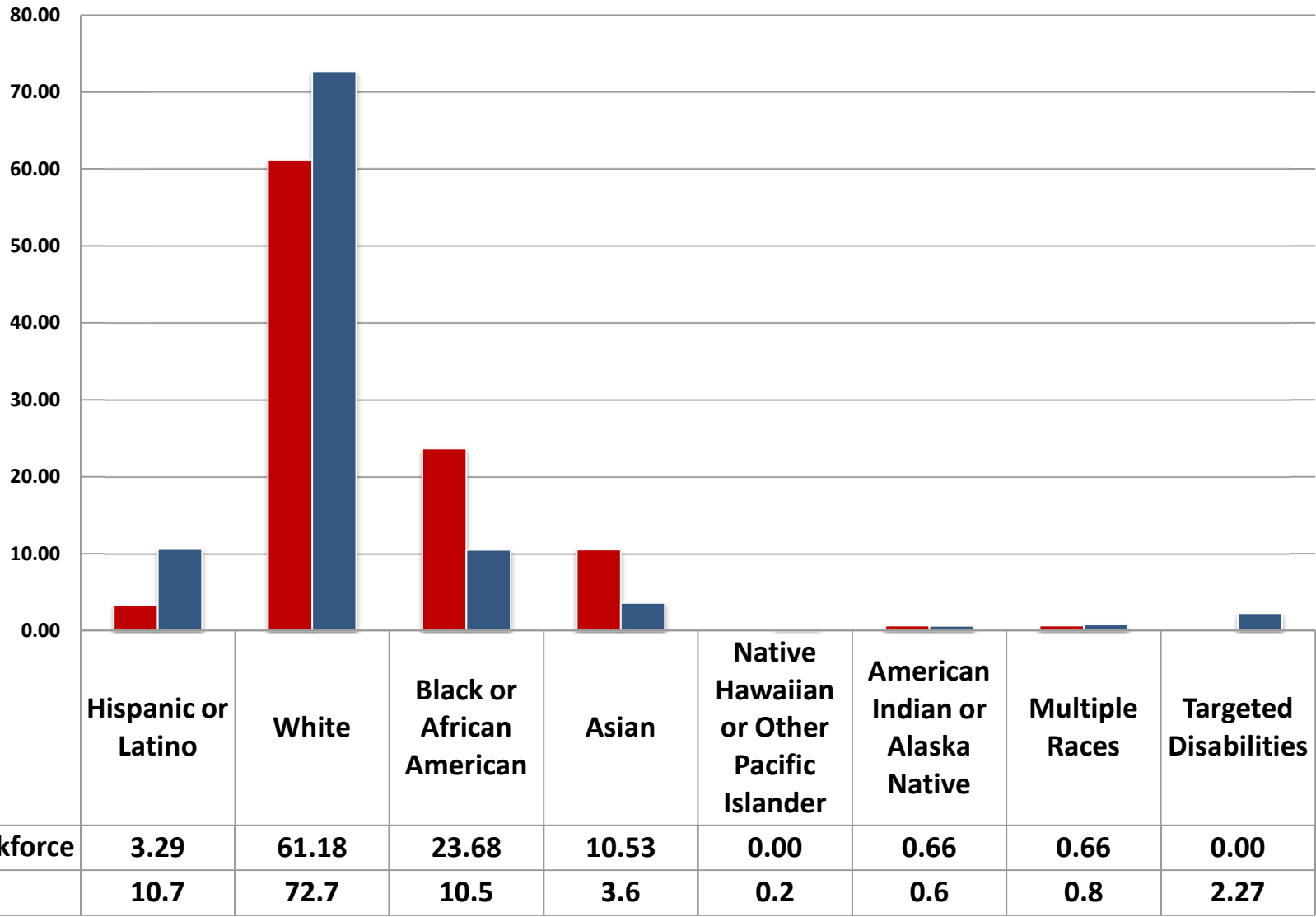
	Hispanic or Latino	White	Black or African American	Asian	Native Hawaiian or Other Pacific Islander	American Indian or Alaska Native	Multiple Races	Targeted Disabilities
■ Workforce	2.54	60.59	25.85	10.17	0.00	0.85	0.00	0.85
■ CLF	10.7	72.7	10.5	3.6	0.2	0.6	0.8	2.27

NTIS Quarter 4 2011

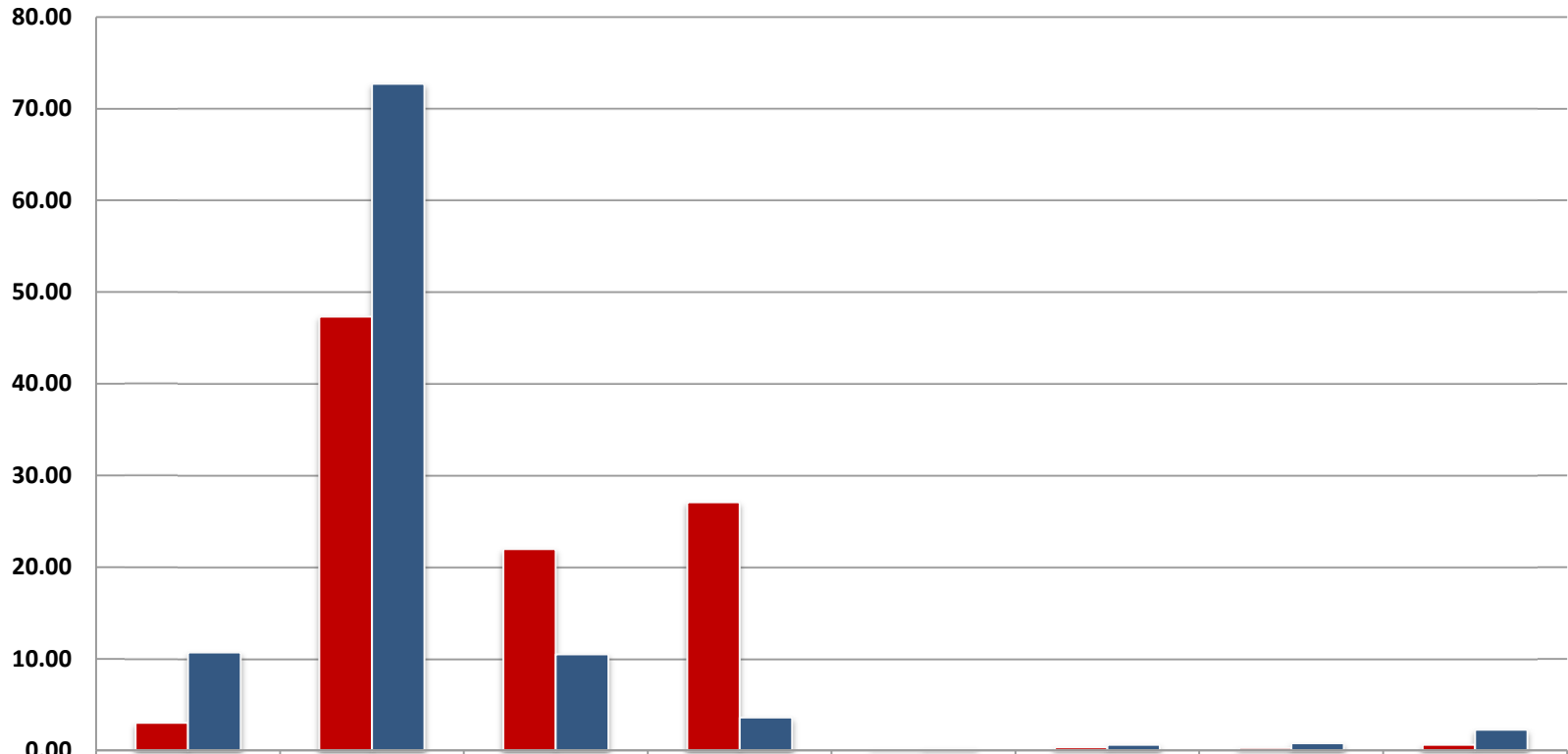


	Hispanic or Latino	White	Black or African American	Asian	Native Hawaiian or Other Pacific Islander	American Indian or Alaska Native	Multiple Races	Targeted Disabilities
■ Workforce	0.89	60.71	30.36	7.14	0.00	0.00	0.89	4.46
■ CLF	10.7	72.7	10.5	3.6	0.2	0.6	0.8	2.27

OS Quarter 4 2011

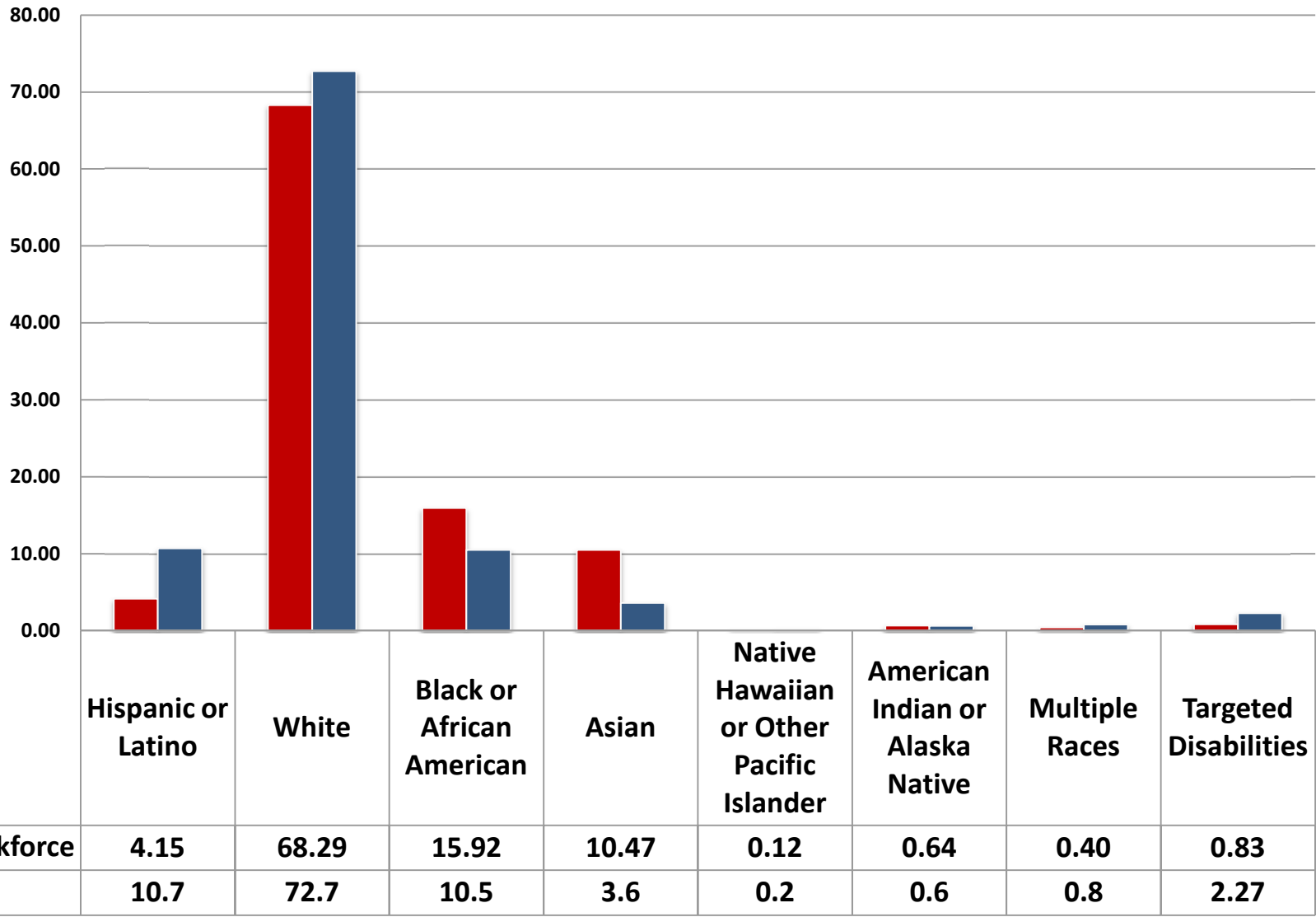


PTO Quarter 4 2011

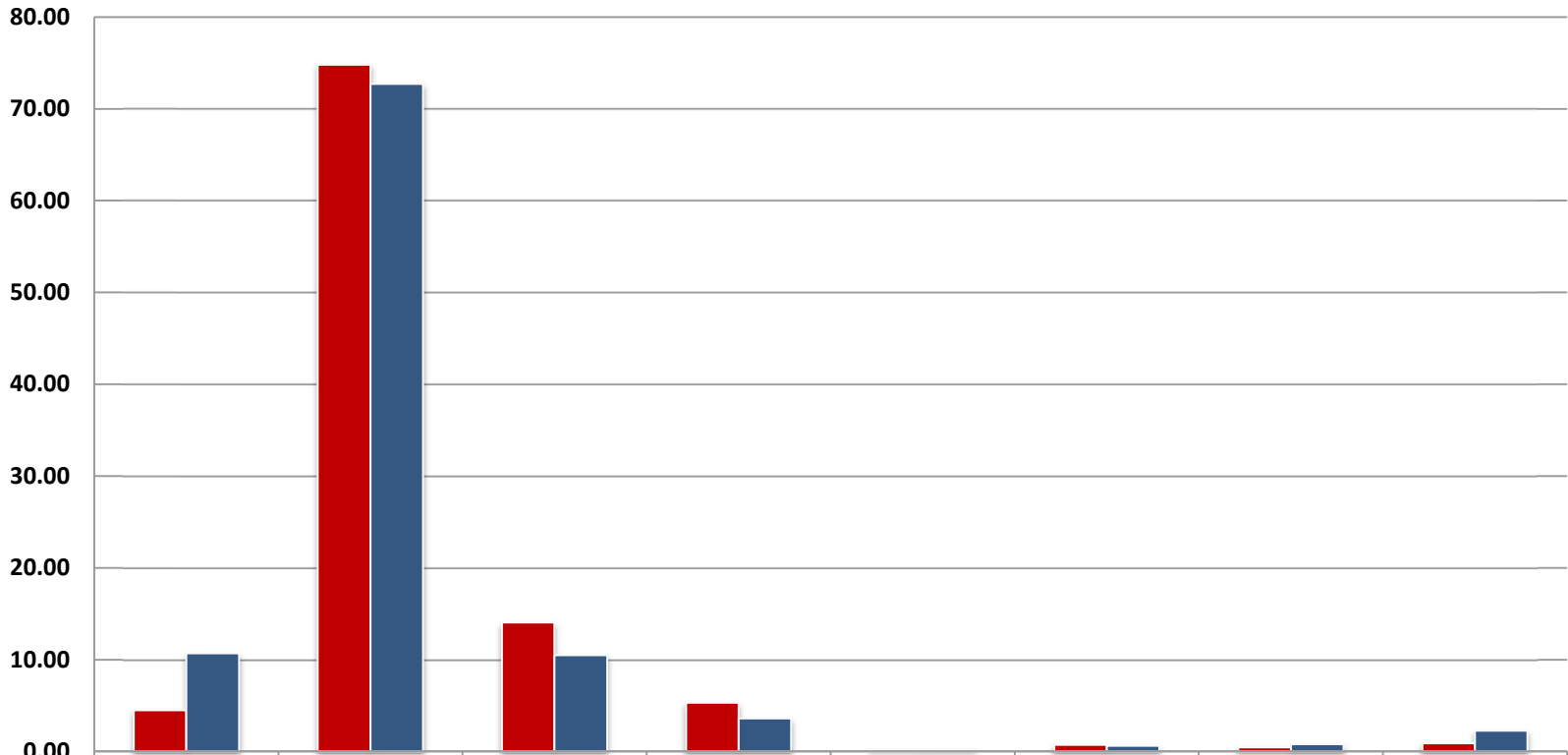


	Hispanic or Latino	White	Black or African American	Asian	Native Hawaiian or Other Pacific Islander	American Indian or Alaska Native	Multiple Races	Targeted Disabilities
Workforce	3.00	47.34	21.96	27.08	0.01	0.35	0.26	0.60
CLF	10.7	72.7	10.5	3.6	0.2	0.6	0.8	2.27

DOC All Quarter 4 2011



DOC Non-PTO Quarter 4 2011



	Hispanic or Latino	White	Black or African American	Asian	Native Hawaiian or Other Pacific Islander	American Indian or Alaska Native	Multiple Races	Targeted Disabilities
■ Workforce	4.50	74.81	14.05	5.30	0.16	0.73	0.45	0.90
■ CLF	10.7	72.7	10.5	3.6	0.2	0.6	0.8	2.27

Table A1: TOTAL WORKFORCE - Distribution by Race/Ethnicity and Sex

Employment Tenure	Total Employees	RACE/ETHNICITY						Multiple Races
		Hispanic or Latino	Non-Hispanic or Latino					
			White	Black or African American	Asian	Native Hawaiian or Other Pacific Islander	American Indian or Alaska	
All								

TOTAL

Prior FY	#	46,588	1,819	32,078	7,686	4,461	61	308	175
	%	100.0%	3.9%	68.9%	16.5%	9.6%	0.1%	0.7%	0.4%
Current FY	#	47,773	2,001	32,797	7,682	4,684	60	310	239
	%	100.0%	4.2%	68.7%	16.1%	9.8%	0.1%	0.6%	0.5%
CLF (2000)	%	100.0%	10.2%	72.7%	10.5%	3.6%	0.2%	0.6%	0.3%
Difference	#	1,185	182	719	-4	223	-1	2	64
Ratio Change	%	0.0%	0.3%	-0.2%	-0.4%	0.2%	0.0%	0.0%	0.1%
Net Change	%	2.5%	10.0%	2.2%	-0.1%	5.0%	-1.6%	0.6%	36.6%
PERMANENT									
Prior FY	#	41,375	1596	28478	6653	4227	45	269	107
	%	100.0%	3.9%	68.8%	16.1%	10.2%	0.1%	0.7%	0.3%
Current FY	#	42,819	1776	29242	6818	4482	53	276	172
	%	100.0%	4.1%	68.3%	15.9%	10.5%	0.1%	0.6%	0.4%
Difference	#	1,444	180	764	165	255	8	7	65
Ratio Change	%	0.0%	0.3%	-0.5%	-0.2%	0.3%	0.02%	-0.01%	0.14%
Net Change	%	3.5%	11.3%	2.7%	2.5%	6.0%	17.8%	2.6%	60.7%
TEMPORARY									
Prior FY	#	5,213	223	3600	1033	234	16	39	68
	%	100.0%	4.3%	69.1%	19.8%	4.5%	0.3%	0.7%	1.3%
Current FY	#	4,954	225	3555	864	202	7	34	67
	%	100.0%	4.5%	71.8%	17.4%	4.1%	0.1%	0.7%	1.4%
Difference	#	-259	2	-45	-169	-32	-9	-5	-1
Ratio Change	%	0.0%	0.3%	2.7%	-2.4%	-0.4%	-0.2%	-0.1%	0.0%
Net Change	%	-5.0%	0.9%	-1.3%	-16.4%	-13.7%	-56.3%	-12.8%	-1.5%

Table B1: TOTAL WORKFORCE - Distribution by Disability

Employment Tenure	Total	Total by Disability Status				Detail for Targeted Disabilities									
		[05] No Disability	[01] Not Identified	[06-94] Disability	Targeted Disability	[16,17] Deafness	[23,25] Blindness	[28, 32-38] Missing Limbs	[64-68] Partial Paralysis	[71-78] Total Paralysis	[82] Convulsive Disorder	[90] Mental Re-tardation	[91] Mental Illness	[92] Distortion of Limb/ Spine	
TOTAL															
Prior FY	#	46,588	42,421	1,094	3,073	396	53	39	13	43	20	61	24	134	9
	%	100.0%	91.1%	2.3%	6.6%	0.9%	0.1%	0.1%	0.0%	0.1%	0.0%	0.1%	0.1%	0.3%	0.0%
Current FY	#	47,773	43,163	1,325	3,285	394	51	36	11	43	20	69	22	135	7
	%	1.0%	0.9%	0.0%	0.1%	0.0%	0.0%	0.0%	0.0%	0.0%	0.0%	0.0%	0.0%	0.0%	0.0%
Difference	#	1,185	742	231	212	-2	-2	-3	-2	0	0	8	-2	1	-2
Ratio Change	%	0.0%	-0.7%	0.4%	0.3%	0.0%	0.0%	0.0%	0.0%	0.0%	0.0%	0.0%	0.0%	0.0%	0.0%
Net Change	%	2.5%	1.7%	21.1%	6.9%	-0.5%	-3.8%	-7.7%	-15.4%	0.0%	0.0%	13.1%	-8.3%	0.7%	-22.2%
Federal High	%					2.27%									
PERMANENT															
Prior FY	#	41,375	37,863	959	2,553	340	46	37	9	37	20	55	24	104	8
	%	100.0%	91.5%	2.3%	6.2%	0.8%	0.1%	0.1%	0.0%	0.1%	0.0%	0.1%	0.1%	0.3%	0.0%
Current FY	#	42,819	39,001	1,082	2,736	355	50	33	11	37	18	62	22	117	5
	%	1.0%	0.9%	0.0%	0.1%	0.0%	0.0%	0.0%	0.0%	0.0%	0.0%	0.0%	0.0%	0.0%	0.0%
Difference	#	1,444	1,138	123	183	15	4	-4	2	0	-2	7	-2	13	-3
Ratio Change	%	0.0%	-0.4%	0.2%	0.2%	0.0%	0.0%	0.0%	0.0%	0.0%	0.0%	0.0%	0.0%	0.0%	0.0%
Net Change	%	3.5%	3.0%	12.8%	7.2%	4.4%	8.7%	-10.8%	22.2%	0.0%	-10.0%	12.7%	-8.3%	12.5%	-37.5%
TEMPORARY															
Prior FY	#	5,213	4,558	135	520	56	7	2	4	6	0	6	0	30	1
	%	100.0%	87.4%	2.6%	10.0%	1.1%	0.1%	0.0%	0.1%	0.1%	0.0%	0.1%	0.0%	0.6%	0.0%
Current FY	#	4,954	4,162	243	549	39	1	3	0	6	2	7	0	18	2
	%	1.0%	0.8%	0.0%	0.1%	0.0%	0.0%	0.0%	0.0%	0.0%	0.0%	0.0%	0.0%	0.0%	0.0%
Difference	#	-259	-396	108	29	-17	-6	1	-4	0	2	1	0	-12	1
Ratio Change	%	0.0%	-3.4%	2.3%	1.1%	-0.3%	-0.1%	0.0%	-0.1%	0.0%	0.0%	0.0%	0.0%	-0.2%	0.0%
Net Change	%	-5.0%	-8.7%	80.0%	5.6%	-30.4%	-85.7%	50.0%	-100.0%	0.0%	0.0%	16.7%	#DIV/0!	-40.0%	100.0%

Department of Commerce/FY 2011 Qtr 4

Table A2: TOTAL WORKFORCE (PERMANENT EMPLOYEES ONLY) BY COMPONENT - Distribution I

Employment Tenure		Total Employees	RACE/ETHNICITY						
			Hispanic or Latino	Non-Hispanic or Latino					Multiple Races
				White	Black or African American	Asian	Native Hawaiian or Other Pacific Islander	American Indian or Alaska Native	
All									
TOTAL FY	#	42,819	1,776	29,242	6,818	4,482	53	276	172
	%	100%	4.1%	68.3%	15.9%	10.5%	0.1%	0.6%	0.4%
CLF (2000)	%	100	10.7%	72.7%	10.5%	3.6%	0.2%	0.6%	0.0%
51-O/S	#	801	21	434	291	45	0	5	5
	%	100.0%	2.6%	54.2%	36.3%	5.6%	0.0%	0.6%	0.6%
52-EDA	#	182	8	124	38	9	0	1	2
	%	100.0%	4.4%	68.1%	20.9%	4.9%	0.0%	0.5%	25.0%
53-BEA	#	502	18	325	106	52	0	0	1
	%	100.0%	3.6%	64.7%	21.1%	10.4%	0.0%	0.0%	5.6%
54-NOAA	#	12687	338	10557	1028	622	33	80	29
	%	100.0%	2.7%	83.2%	8.1%	4.9%	0.3%	0.6%	0.2%
55-ITA	#	1415	60	1048	206	89	0	3	9
	%	100.0%	4.2%	74.1%	14.6%	6.3%	0.0%	0.2%	0.6%
57-NIST	#	2834	77	2221	247	259	1	14	15
	%	100.0%	2.7%	78.4%	8.7%	9.1%	0.0%	0.5%	0.5%
59-MBDA	#	61	14	8	35	4	0	0	0
	%	100.0%	23.0%	13.1%	57.4%	6.6%	0.0%	0.0%	0.0%
61-NTIA	#	236	6	143	61	24	0	2	0
	%	100.0%	2.5%	60.6%	25.8%	10.2%	0.0%	0.8%	0.0%
62-NTIS	#	112	1	68	34	8	0	0	1
	%	100.0%	0.9%	60.7%	30.4%	7.1%	0.0%	0.0%	0.9%
63-CENSUS	#	13283	909	9151	2411	578	18	133	83
	%	100.0%	6.8%	68.9%	18.2%	4.4%	0.1%	1.0%	0.6%
64-OIG	#	152	5	93	36	16	0	1	1
	%	100.0%	3.3%	61.2%	23.7%	10.5%	0.0%	0.7%	0.7%
65-ESA	#	35	3	24	6	2	0	0	0
	%	100.0%	8.6%	68.6%	17.1%	5.7%	0.0%	0.0%	0.0%
67-BIS	#	358	11	236	88	22	0	1	0
	%	100.0%	3.1%	65.9%	24.6%	6.1%	0.0%	0.3%	0.0%
67-PTO	#	10161	305	4810	2231	2752	1	36	26
	%	100.0%	3.0%	47.3%	22.0%	27.1%	0.0%	0.4%	0.3%

Component	HISPANIC	WHITE	BLACK	ASIAN	HAWAIIAN	INDIAN	Multiple Race	TOTAL	AGENCY
370	10	243	88	22	0	0	4	84	O/S
95	5	3	73	51	13	25	3	6	EDA
289	10	217	35	27	0	0	0	0	BEA
8496	218	7418	394	397	4	55	10	19	NOAA
703	34	26	585	39	39	0	2	4	ITA
1799	35	1481	118	153	1	6	5	391	NIST

36	9	5	17	5	0	0	0	17	MBDA
140	4	99	24	12	0	1	0	50	NTIA
52	0	28	17	7	0	0	0	0	NTIS
4666	319	3376	615	295	0	34	27	4206	CENSUS
80	3	56	13	8	0	0	0	18	OIG
14	0	12	1	1	0	0	0	4	ESA
218	6	169	28	14	0	1	0	14	BIS
6431	186	3329	936	1934	0	28	18	53	PTO

51
52
53
54
55
57

59
61
62
63
64
65
67
56

Table B2: PERMANENT EMPLOYEES - TOTAL WORKFORCE BY COMPONENT- Distribution by Disability [OPM Form 256 Self-Identification Codes]

Employment Tenure	Total	Total by Disability Status				Detail for Targeted Disabilities									
		[05] No Disability	[01] Not Identified	[06-94] Disability	Targeted Disability	[16,17] Deafness	[23,25] Blindness	[28,32-38] Missing Limbs	[64-68] Partial Paralysis	[71-78] Total Paralysis	[82] Convulsive Disorder	[90] Mental Re-tardation	[91] Mental Illness	[92] Distortion of Limb/Spine	
Total Work Force	#	42,819	39,001	1,082	2,736	355	50	33	11	37	18	62	22	117	5
	%	100.00%	91.08%	2.53%	6.39%	0.83%	0.12%	0.08%	0.03%	0.09%	0.04%	0.14%	0.05%	0.27%	0.01%
Federal High	%					2.27%									
51-O/S	#	801	731	23	47	6	1	0	0	0	0	3	0	2	0
	%	100.00%	91.26%	2.87%	5.87%	0.75%	0.12%	0.00%	0.00%	0.00%	0.00%	0.37%	0.00%	0.25%	0.00%
52-EDA	#	182	169	4	9	2	0	0	0	1	0	0	0	1	0
	%	100.00%	92.86%	2.20%	4.95%	1.10%	0.00%	0.00%	0.00%	0.55%	0.00%	0.00%	0.00%	0.55%	0.00%
53-BEA	#	504	470	14	20	2	1	0	0	1	0	0	0	0	0
	%	100.00%	93.25%	2.78%	3.97%	0.40%	0.20%	0.00%	0.00%	0.20%	0.00%	0.00%	0.00%	0.00%	0.00%
54-NOAA	#	12,687	11,788	244	655	81	16	14	4	9	7	8	5	18	0
	%	100.00%	92.91%	1.92%	5.16%	0.64%	0.13%	0.11%	0.03%	0.07%	0.06%	0.06%	0.04%	0.14%	0.00%
55-ITA	#	1,415	1,349	16	50	9	1	2	1	2	0	0	0	3	0
	%	100.00%	95.34%	1.13%	3.53%	0.64%	0.07%	0.14%	0.07%	0.14%	0.00%	0.00%	0.00%	0.21%	0.00%
57-NIST	#	2,836	2,604	71	161	26	1	2	3	1	2	2	6	7	2
	%	22.35%	20.52%	0.56%	1.27%	0.20%	0.01%	0.02%	0.02%	0.01%	0.02%	0.02%	0.05%	0.06%	0.02%
59-MBDA	#	61	51	3	7	1	0	0	0	0	1	0	0	0	0
	%	0.48%	0.40%	0.02%	0.06%	0.01%	0.00%	0.00%	0.00%	0.00%	0.01%	0.00%	0.00%	0.00%	0.00%
61-NTIA	#	236	214	4	18	2	1	0	0	1	0	0	0	0	0
	%	1.86%	1.69%	0.03%	0.14%	0.02%	0.01%	0.00%	0.00%	0.01%	0.00%	0.00%	0.00%	0.00%	0.00%
62-NTIS	#	112	101	0	11	5	1	0	0	0	0	0	2	1	1
	%	0.88%	0.80%	0.00%	0.09%	0.04%	0.01%	0.00%	0.00%	0.00%	0.00%	0.00%	0.02%	0.01%	0.01%
63-CENSUS	#	13,283	11,601	370	1,312	157	20	10	2	13	5	33	8	65	1
	%	104.70%	91.44%	2.92%	10.34%	1.24%	0.16%	0.08%	0.02%	0.10%	0.04%	0.26%	0.06%	0.51%	0.01%
64-OIG	#	152	137	5	10	0	0	0	0	0	0	0	0	0	0
	%	1.20%	1.08%	0.04%	0.08%	0.00%	0.00%	0.00%	0.00%	0.00%	0.00%	0.00%	0.00%	0.00%	0.00%
65-ESA	#	35	34	0	1	0	0	0	0	0	0	0	0	0	0
	%	0.28%	0.27%	0.00%	0.01%	0.00%	0.00%	0.00%	0.00%	0.00%	0.00%	0.00%	0.00%	0.00%	0.00%
67-BIS	#	358	343	2	13	3	0	0	0	1	0	0	0	2	0
	%	2.82%	2.70%	0.02%	0.10%	0.02%	0.00%	0.00%	0.00%	0.01%	0.00%	0.00%	0.00%	0.02%	0.00%

AGENCY	PTOTAL	Hispanic or Latino	White	Black or African American	Asian	Native Hawaiian or Other Pacific Islander	American Indian or Alaska Native	Multiple Races
BEA	502	18	325	106	52	0	0	1
Workforce		3.59	64.74	21.12	10.36	0.00	0.00	0.20
CLF		10.7	72.7	10.5	3.6	0.2	0.6	0.8
BIS	358	11	236	88	22	0	1	0
Workforce		3.07	65.92	24.58	6.15	0.00	0.28	0.00
CLF		10.7	72.7	10.5	3.6	0.2	0.6	0.8
CENSUS	13283	909	9151	2411	578	18	133	83
Workforce		6.84	68.89	18.15	4.35	0.14	1.00	0.62
CLF		10.7	72.7	10.5	3.6	0.2	0.6	0.8
EDA	182	8	124	38	9	0	1	2
Workforce		4.40	68.13	20.88	4.95	0.00	0.55	1.10
CLF		10.7	72.7	10.5	3.6	0.2	0.6	0.8
ESA	35	3	24	6	2	0	0	0
Workforce		8.57	68.57	17.14	5.71	0.00	0.00	0.00
CLF		10.7	72.7	10.5	3.6	0.2	0.6	0.8
ITA	1415	60	1048	206	89	0	3	9
Workforce		4.24	74.06	14.56	6.29	0.00	0.21	0.64
CLF		10.7	72.7	10.5	3.6	0.2	0.6	0.8
MBDA	61	14	8	35	4	0	0	0
Workforce		22.95	13.11	57.38	6.56	0.00	0.00	0.00
CLF		10.7	72.7	10.5	3.6	0.2	0.6	0.8
NIST	2834	77	2221	247	259	1	14	15
Workforce		2.72	78.37	8.72	9.14	0.04	0.49	0.53
CLF		10.7	72.7	10.5	3.6	0.2	0.6	0.8
NOAA	12687	338	10557	1028	622	33	80	29
Workforce		2.66	83.21	8.10	4.90	0.26	0.63	0.23
CLF		10.7	72.7	10.5	3.6	0.2	0.6	0.8
NTIA	236	6	143	61	24	0	2	0
Workforce		2.54	60.59	25.85	10.17	0.00	0.85	0.00
CLF		10.7	72.7	10.5	3.6	0.2	0.6	0.8
NTIS	112	1	68	34	8	0	0	1
Workforce		0.89	60.71	30.36	7.14	0.00	0.00	0.89
CLF		10.7	72.7	10.5	3.6	0	0	0.8
O/S	801	21	434	291	45	0	5	5
Workforce		2.62	54.18	36.33	5.62	0.00	0.62	0.62

CLF		10.7	72.7	10.5	3.6	0.2	0.6	0.8
OIG	152	5	93	36	16	0	1	1
Workforce		3.29	61.18	23.68	10.53	0.00	0.66	0.66
CLF		10.7	72.7	10.5	3.6	0.2	0.6	0.8
Sub Total	32658	1471	24432	4587	1730	52	240	146
Workforce		4.50	74.81	14.05	5.30	0.16	0.73	0.45
CLF		10.7	72.7	10.5	3.6	0.2	0.6	0.8
PTO	10161	305	4810	2231	2752	1	36	26
Workforce		3.00	47.34	21.96	27.08	0.01	0.35	0.26
CLF		10.7	72.7	10.5	3.6	0.2	0.6	0.8
TOTAL	42,819	1776	29242	6818	4482	53	276	172
Workforce		4.15	68.29	15.92	10.47	0.12	0.64	0.40
CLF		10.7	72.7	10.5	3.6	0.2	0.6	0.8

Targeted Disabilities
2
0.40
2.27
3
0.84
2.27
157
1.18
2.27
2
1.10
2.27
0
0.00
2.27
9
0.64
2.27
1
1.64
2.27
26
0.92
2.27
81
0.64
2.27
2
0.85
2.27
5
4.46
2.27
6
0.75

2.27
0
0.00
2.27
294
0.90
2.27
61
0.60
2.27
355
0.83
2.27